

HEALY BENDER PATTON & BEEN
ARCHITECTS
4040 Helene Avenue
Naperville, Illinois 60564

ADDENDUM NO. 3
February 4, 2025

2025 CARBON MONOXIDE
DETECTOR WORK IN
MULTIPLE BUILDINGS
JOLIET, ILLINOIS
FOR
JOLIET PUBLIC SCHOOLS DISTRICT 86
JOLIET, WILL COUNTY, ILLINOIS
PROJECT NO. 6-1324-32

This addendum shall be considered as part of the Contract Documents or Bidding Documents, as applicable, and shall govern insofar as it changes, deletes from, or adds to the original Contract Documents or Bidding Documents, as applicable.

The Contract Documents or Bidding Documents as applicable shall be modified to incorporate the following changes:

I. PROJECT MANUAL

A. Section 00 80 00 – Supplementary Conditions

A. DELETE paragraph number 9. in its entirety and REPLACE with the following:

“9. Subparagraph 9.3.1, ADD new subparagraphs 9.3.1.3 through 9.3.1.7 as follows:

9.3.1.3 Prior to 50% completion of the Work, payments will be made to Contractor by Owner at 30-day intervals for 90% of value of work performed and materials delivered and suitably stored at building site and materials suitably stored at some other location, as described in Section 9.3.2, at the date of application made by the Contractor less the Value of Work performed and materials delivered or stored, recognized as the basis for previous payments.

Once Work is 50% complete, payments will be made to Contractor by Owner at 30-day intervals for 95% of value of work performed and materials delivered and suitably stored at building site and materials suitably stored at some other location, as described in Section 9.3.2, at the date of application made by the Contractor less the Value of Work performed and materials delivered or stored, recognized as the basis for previous payments.

Bonding and retainage shall be governed by the Illinois Public Construction Bond Act, 30 ILCS 550/1.

Each application shall give an itemized account of all labor and material delivered at the Project site, or suitably stored at some other location, subdivided as per Section 9.2. The Contractor shall make an application for each respective payment at such a time to allow at least seven (7) days for the Architect to consider and value such estimate and prepare certificates.

9.3.1.4 After achieving Substantial Completion, the Contractor may request reduction in retainage with Owner's approval on a subcontractor-by-subcontractor basis from that indicated in Section 9.3.1.3 down to zero. Retainage will be reduced to zero for subcontractors who have completed their portion of the work including the completion of punch list items. Notarized Final Waivers of Lien from the subcontractors involved must accompany the Application for Payment. Portions of the work being performed by the Contractor and Contractor's general conditions, overhead and profit, bonds and insurance, etc. are excluded from this reduction in retainage provision. The Contractor will receive those monies upon final acceptance of the work.

9.3.1.5 Within 30 days of the date of the contract, the Contractor shall submit the Construction Schedule for the Work, the Schedule of Submittals which must be coordinated with the Construction Schedule, allowing the Architect reasonable time for review and indicating the required approval date for each required submittal, and Schedule of Values indicating each subcontractor's name, assigned work, and contract amount to the Architect. The first payment application will not be processed until the construction schedule, submittal schedule, and Schedule of Values have been submitted to and approved by the Architect.

9.3.1.6 Within 60 days of the date of the contract or within 40% of the Contract Time, whichever is less, the Contractor shall submit all required shop drawings, product data, samples, and color charts specified in Section 01 33 00 - Submittals and Substitutions. Payment applications received after this time period will not be submitted to the Owner until all required shop drawings, product data, samples, and color charts specified in Section 01 33 00 - Submittals and Substitutions have been submitted to the Architect.

9.3.1.7 The Contractor shall submit certified payroll forms electronically through the Illinois Department of Labor web-based portal. Certified payroll forms are not required to be submitted with Applications for Payment. At the request of the Owner, the Contractor shall furnish copies of certified payroll forms that have been submitted electronically through the Illinois Department of Labor web-based portal."

END OF ADDENDUM NO. 3

H:\Projs24\24032\3 Condocs\3.8 Bidding\Addendum 3\24032 Addendum 3.doc

HEALY BENDER PATTON & BEEN
ARCHITECTS
4040 Helene Avenue
Naperville, Illinois 60564

ADDENDUM NO. 2
January 31, 2025

2025 CARBON MONOXIDE
DETECTOR WORK IN
MULTIPLE BUILDINGS
JOLIET, ILLINOIS
FOR
JOLIET PUBLIC SCHOOLS DISTRICT 86
JOLIET, WILL COUNTY, ILLINOIS
PROJECT NO. 6-1324-32

This addendum shall be considered as part of the Contract Documents or Bidding Documents, as applicable, and shall govern insofar as it changes, deletes from, or adds to the original Contract Documents or Bidding Documents, as applicable.

The Contract Documents or Bidding Documents as applicable shall be modified to incorporate the following changes:

I. PROJECT MANUAL

A. Section 00 02 00 - Notice To Bidders

A. First paragraph; DELETE the bid date and time that reads “until 10:00 A.M. prevailing time on the 4th day of February, 2025” and REVISE to the following:

“until 2:00 P.M. prevailing time on the 5th day of February, 2025”

END OF ADDENDUM NO. 2

H:\Projs24\24032\3 Condocs\3.8 Bidding\Addendum 2\24032 Addendum 2.doc

HEALY BENDER PATTON & BEEN
ARCHITECTS
4040 Helene Avenue
Naperville, Illinois 60564

ADDENDUM NO. 1
January 28, 2025

2025 CARBON MONOXIDE
DETECTOR WORK IN
MULTIPLE BUILDINGS
JOLIET, ILLINOIS
FOR
JOLIET PUBLIC SCHOOLS DISTRICT 86
JOLIET, WILL COUNTY, ILLINOIS
PROJECT NO. 6-1324-32

This addendum shall be considered as part of the Contract Documents or Bidding Documents, as applicable, and shall govern insofar as it changes, deletes from, or adds to the original Contract Documents or Bidding Documents, as applicable.

The Contract Documents or Bidding Documents as applicable shall be modified to incorporate the following changes:

I. PROJECT MANUAL

A. Section 01 23 00 – Alternate Bids

1. DELETE paragraph 1.02.A. in its entirety and REPLACE with the following:

“A. Alternate Bid 1 – HARDWIRED CO SENSORS AT MECHANICAL ROOMS

1. Base Bid does not include the CO Sensor work at Mechanical Rooms as shown on the drawings at Room 3 at A.O. Marshall Elementary School, Room 110 at Farragut Elementary School, Room A18 at Lynne Thigpen Elementary School, Rooms 03 and 103 (as indicated in the east Mechanical Room on the Lower Level Plan) at Thompson Instructional Center, Room 006 at JFK Administrative Center, Room 001 at Building Support Services, specified, and/or required including all trades appurtenances, incidentals and any related work for complete installation.
2. This Alternate Bid consists of providing hardwire CO sensor at at Mechanical Rooms as shown on the drawings at Room 3 at A.O. Marshall Elementary School, Room 110 at Farragut Elementary School, Room A18 at Lynne Thigpen Elementary School, Rooms 03 and 103 (as indicated in the east Mechanical Room on the Lower Level Plan) at Thompson Instructional Center, Room 006 at JFK Administrative Center, Room 001 at Building Support Services, specified, and/or required including all trades appurtenances, incidentals and any related work for complete installation.”

II. DRAWINGS

A. Sheet E-4

1. To CLARIFY, as indicated on the Thompson Instructional Center Lower Level Plan there is a lower level to Mechanical Room 103 which is east of Mechanical Room 03.

B. Sheets E-5 & E-6 (2 sheets total)

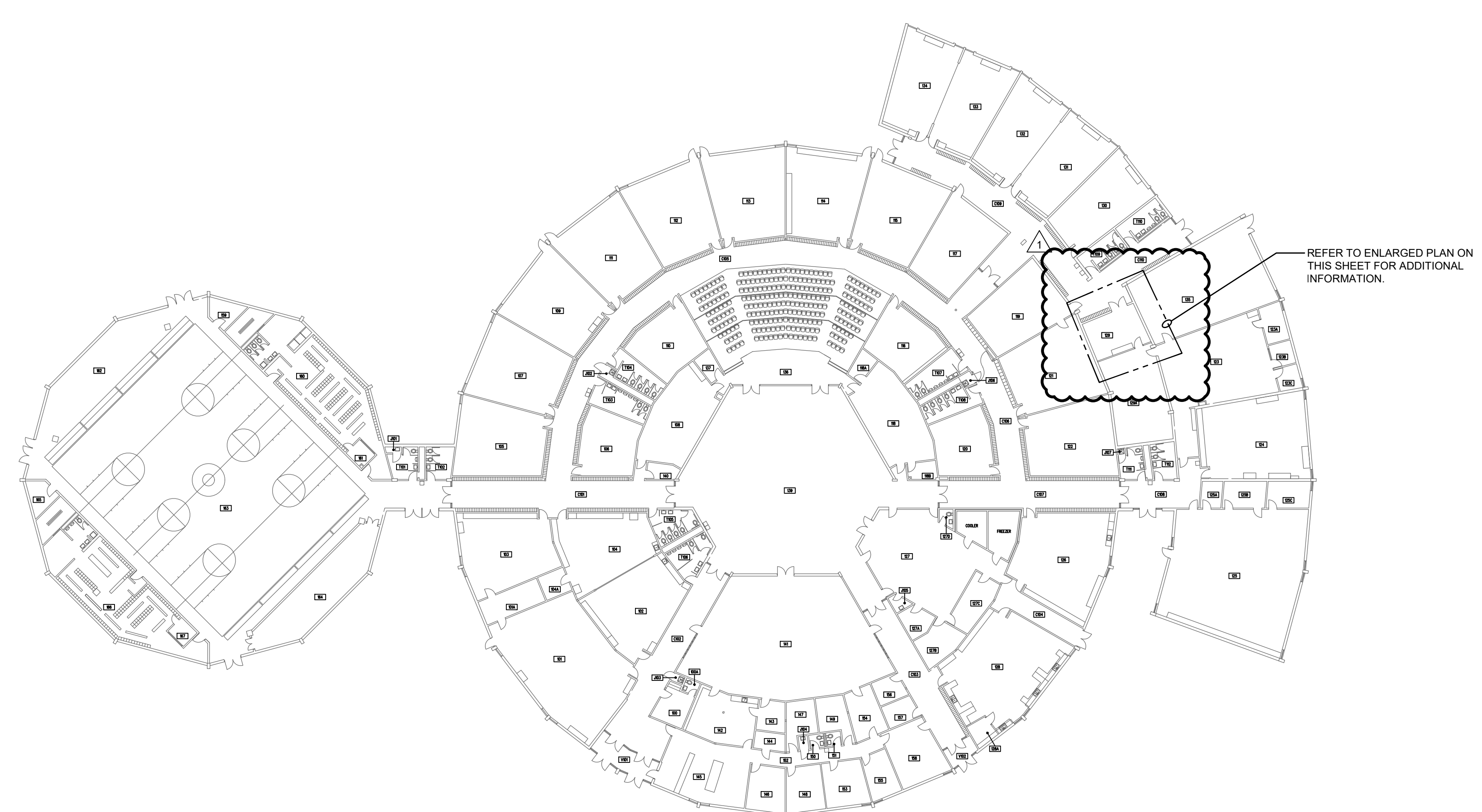
1. DELETE Sheets E-5 & E-6 in their entirety and REPLACE with new Sheets E-5 & E-6 revised dated January 28, 2025 included as part of this Addendum (see attached).

END OF ADDENDUM NO. 1

H:\Projs24\24032\3 Condocs\3.8 Bidding\Addendum 1\24032 Addendum 1.doc

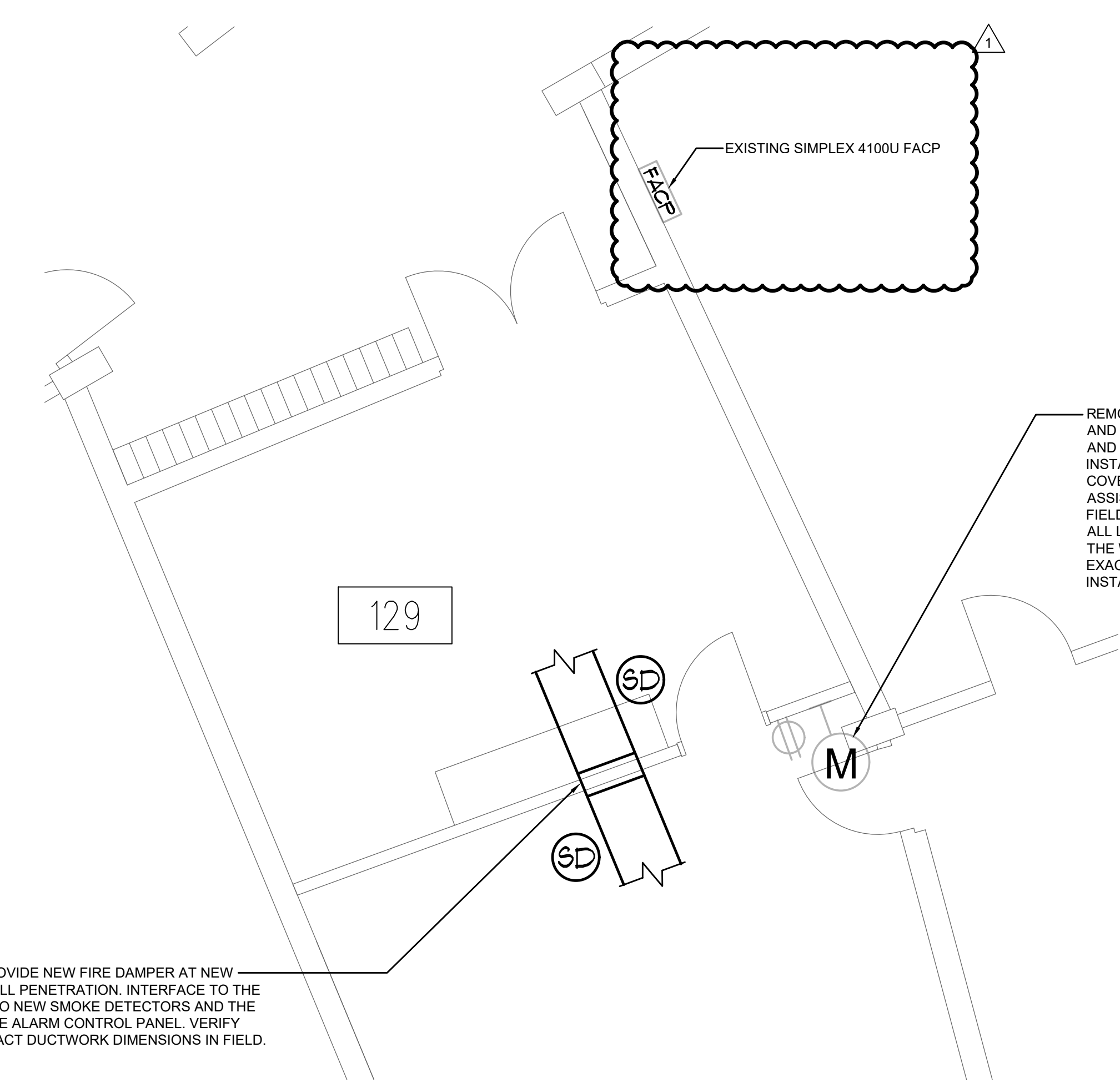
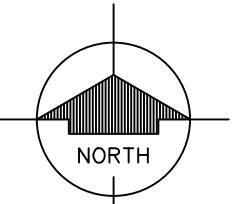
DIRKSEN JUNIOR HIGH SCHOOL
ROOM INDEX

100	OFFICE	142	TEACHER LOUNGE
100A	TOILET	143	OFFICE
101	CLASSROOM	144	VAULT
101A	STORAGE	145	OFFICE
102	RESOURCE	146	ASSISTANT PRINCIPAL
103	CLASSROOM	147	NURSE
104	CLASSROOM	148	CONFERENCE
104A	STORAGE	149	OFFICE
105	CLASSROOM	150	TOILET
106	RESOURCE	151	TOILET
107	CLASSROOM	152	PASSAGE
108	RESOURCE	153	OFFICE
109	CLASSROOM	154	CONFERENCE
110	RESOURCE	155	OFFICE
111	CLASSROOM	156	SPEECH
112	CLASSROOM	157	SOCIAL WORKER
113	CLASSROOM	158	OFFICE
114	CLASSROOM	159	STORAGE
115	CLASSROOM	160	GIRLS LOCKER ROOM
116	CLASSROOM	161	OFFICE
117	CLASSROOM	162	STORAGE
118	CLASSROOM	163	GYMNASIUM
118A	STORAGE	164	STORAGE
118B	STORAGE	165	STORAGE
119	CLASSROOM	166	BOYS LOCKER ROOM
120	RESOURCE	167	OFFICE
121	CLASSROOM	C101	CORRIDOR
122	CLASSROOM	C102	CORRIDOR
123	CLASSROOM	C103	CORRIDOR
123A	STORAGE	C104	CORRIDOR
123B	OFFICE	C105	CORRIDOR
123C	STORAGE	C106	CORRIDOR
124	CLASSROOM	C107	CORRIDOR
125	BAND / MUSIC	C108	CORRIDOR
125A	OFFICE	C109	CORRIDOR
125B	STORAGE	C110	CORRIDOR
125C	OFFICE	J01	JANITOR
126	CLASSROOM	J02	JANITOR
127	KITCHEN	J03	JANITOR
127A	OFFICE	J04	JANITOR
127B	STORAGE	J05	JANITOR
127C	STORAGE	J06	JANITOR
127D	TOILET	J07	JANITOR
128	ART	T101	BOYS
128A	KILN	T102	GIRLS
129	RESOURCE	T103	BOYS
129A	STORAGE	T104	GIRLS
130	CLASSROOM	T105	GIRLS
131	CLASSROOM	T106	BOYS
132	CLASSROOM	T107	BOYS
133	CLASSROOM	T108	GIRLS
134	CLASSROOM	T109	GIRLS
135	BOLER ROOM	T110	BOYS
136	AUDITORIUM	T111	BOYS
137	SPECIAL EDUCATION	T112	GIRLS
139	CAFETERIA	V101	VESTIBULE
140	STORAGE	V102	VESTIBULE
141	LIBRARY		



REFER TO ENLARGED PLAN ON THIS SHEET FOR ADDITIONAL INFORMATION.

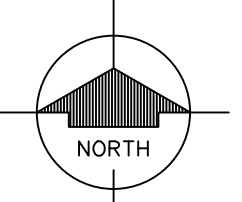
DIRKSEN JR. HIGH SCHOOL
FLOOR PLAN
1" = 30'
0 15 30 60 90



REMOVE AND REINSTALL ALL DEVICES ON BOTH SIDES OF THIS WALL BEING REMOVED AND REBUILT. REMOVE ALL CONDUIT AND WIRING BACK TO THE NEAREST JUNCTION BOX AND EXTEND NEW CONDUIT AND WIRING (MATCHING EXISTING) TO NEW DEVICE INSTALLED IN THE SAME LOCATION WITHIN THE NEW WALL. PROVIDE NEW OUTLETS AND COVER PLATES TO REPLACE THE EXISTING DEVICES. DEVICES SHOWN ARE FOR ASSISTANCE ONLY. VERIFY EXACT LOCATION, QUANTITY, AND TYPES OF DEVICES IN THE FIELD. ALL EXISTING PENETRATIONS SHALL BE MAINTAINED. PROVIDE PVC SLEEVES FOR ALL LOW VOLTAGE WIRING PENETRATIONS. PROTECT ALL WIRING ROUTED THROUGH THE WALL DURING CONSTRUCTION AND GROUP WIRING WHERE POSSIBLE. VERIFY EXACT QUANTITY AND LOCATION OF ALL PENETRATIONS WITH THE ARCHITECT PRIOR TO INSTALLING WITHIN THE NEW WALL. COORDINATE WITH ALL TRADES.

PROVIDE NEW FIRE DAMPER AT NEW WALL PENETRATION. INTERFACE TO THE TWO NEW SMOKE DETECTORS AND THE FIRE ALARM CONTROL PANEL. VERIFY EXACT DUCTWORK DIMENSIONS IN FIELD.

DIRKSEN JR. HIGH SCHOOL
ENLARGED FLOOR PLAN
1" = 1/4" = 1'-0"
0 1 2 4 8 12



**HEALY
BENDER
PATTON
& BEEN**
ARCHITECTS
4040 Helene Avenue
Naperville, IL 60564
T 630.904.4300
www.healybender.com

MILLIES
ENGINEERING GROUP
www.milliesengineeringgroup.com
(219) 924-8400
9711 Valbarossa Drive
Munster, Indiana 46321
221 N. LaSalle Street
Chicago, Illinois 60601
Copyright © 2025 Millies Engineering Group

2025 CARBON MONOXIDE DETECTOR WORK IN MULTIPLE BUILDINGS
JOLIET PUBLIC SCHOOLS DISTRICT 86
FOR
JOLIET, ILLINOIS
JOLIET PUBLIC SCHOOLS DISTRICT 86
JOLIET, WILL COUNTY, ILLINOIS

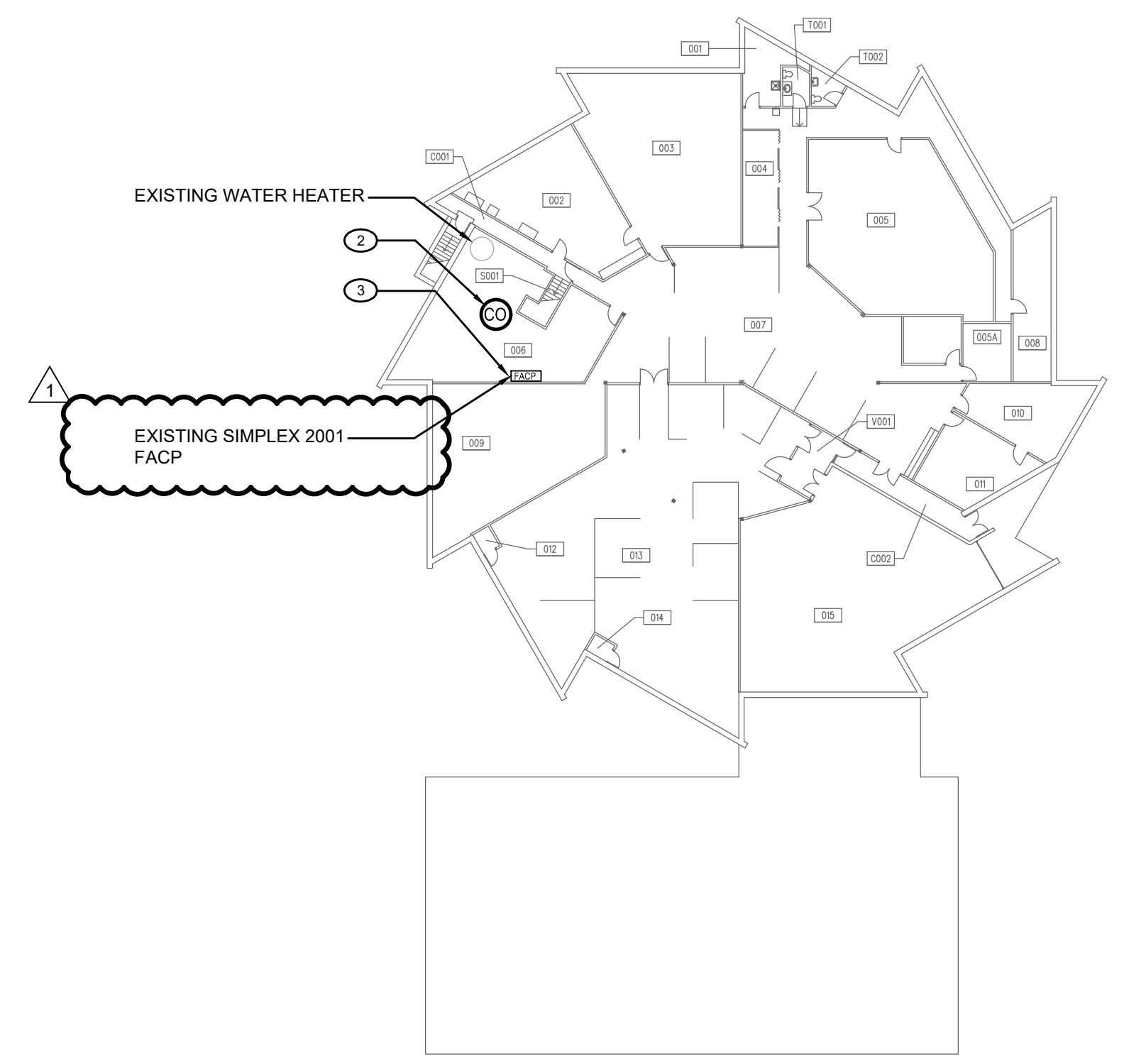
REVISIONS	DATE	DESCRIPTION
1	01-28-2025	ADDENDUM #1
PROJECT NO. 6-1324-32		
DRAWN BY RH		
DATE 01-10-2025		
SHEET NO. E-5		
OF 7		

FLOOR PLAN - DIRKSEN JR. HIGH SCHOOL
COPYRIGHT © 2025 HEALY BENDER PATTON & BEEN ARCHITECTS

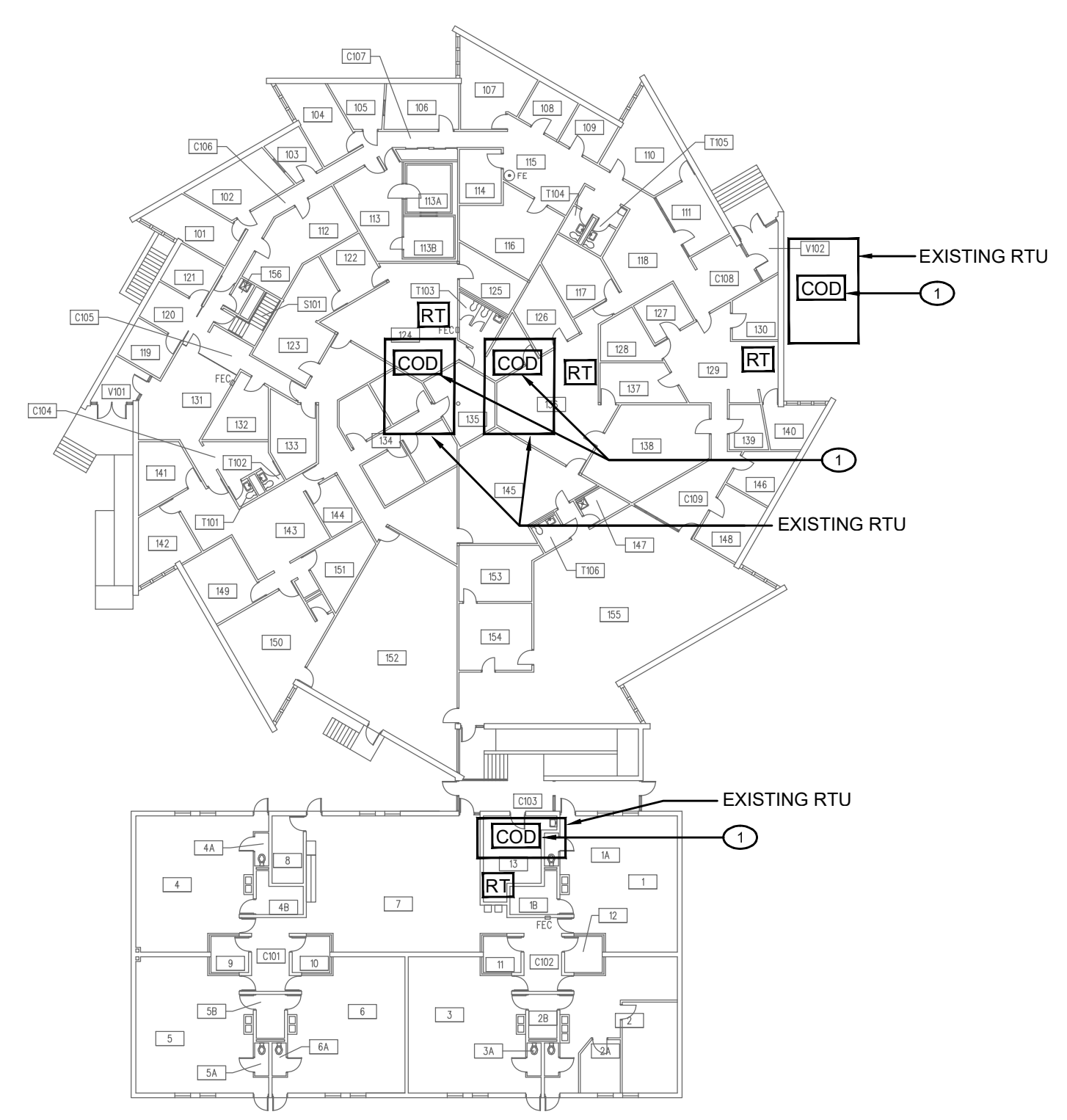
BUILDING SUPPORT SERVICES ROOM INDEX	
LOWER LEVEL	
001 BOILER ROOM	
FIRST FLOOR	
101 STORAGE	101 LUNCH ROOM
102 OFFICE	102 WORK SHOP
103 OFFICE	103 CONFERENCE
104 CONFERENCE	104 STORAGE
105 OFFICE	105 STORAGE
106 STORAGE	106 VEHICLE STORAGE
107 OFFICE	107 JANITOR
108 OFFICE	108 CORRIDOR
109 OFFICE	109 STAR
110 STORAGE	110 TOILET
111 STORAGE	111 TOILET
112 JANITOR	112 TOILET
113 STORAGE	113 TOILET
114 STORAGE	114 VESTIBULE
115 LUNCH ROOM	

JFK ADMINISTRATIVE CENTER ROOM INDEX		
LOWER LEVEL		
001 MECHANICAL	011 OFFICE	
002 LUNCH ROOM	012 MECHANICAL	
003 PRINT ROOM	013 CURRICULUM	
004 STORAGE	014 DEPARTMENT	
005 TRAINING	014 MECHANICAL	
005A OFFICE	015 GARAGE	
006 MECHANICAL ROOM /	C001 CORRIDOR	
CUSTODIAL OFFICE	C002 CORRIDOR	
007 OFFICE	S001 STAR	
008 FILE STORAGE	T001 WOMEN	
009 TECHNOLOGY	T002 MEN	
010 OFFICE	V001 VESTIBULE	

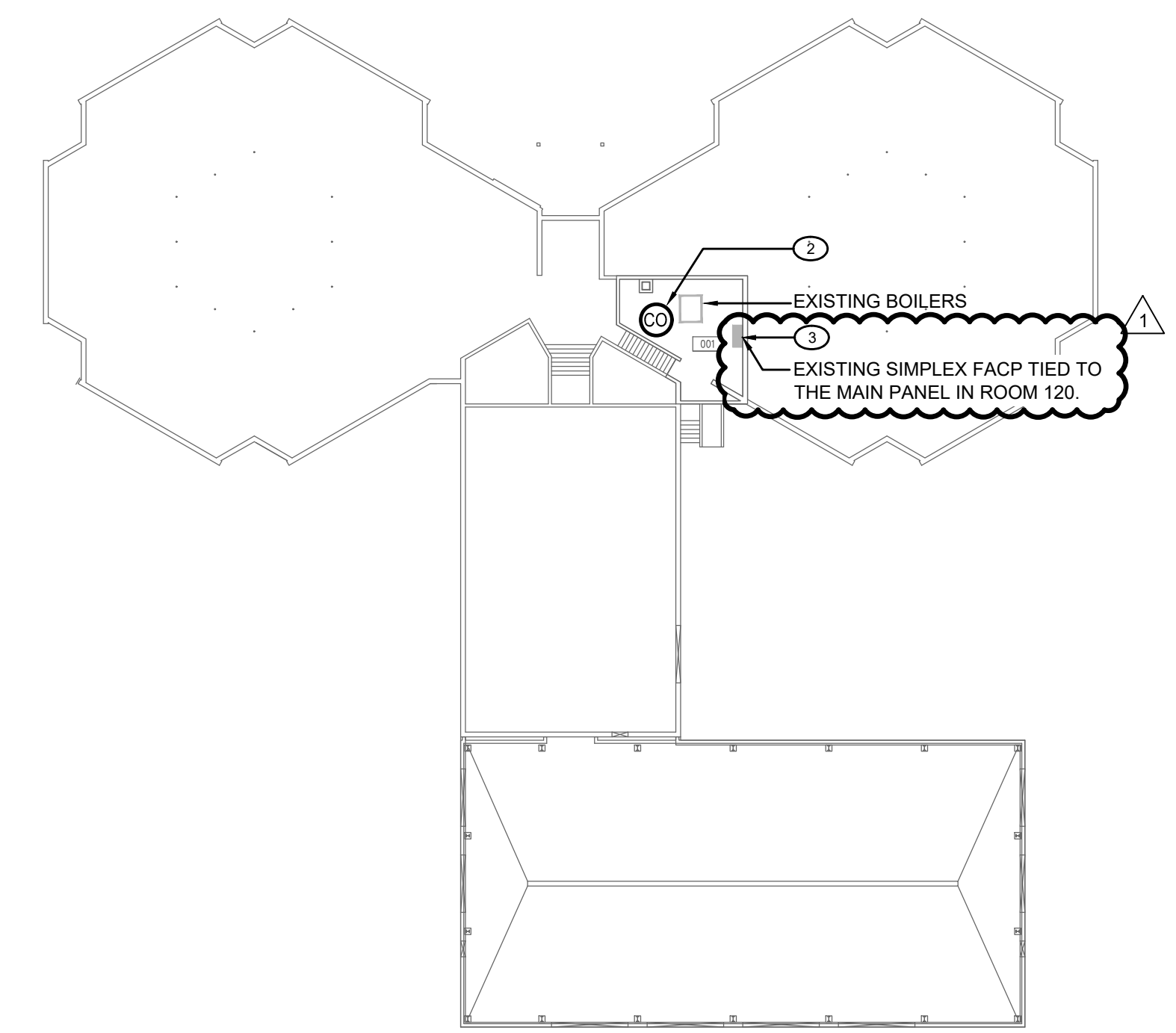
FIRST FLOOR		
1 OFFICE	126 OFFICE	
1A TOILET	127 OFFICE	
1B STORAGE	128 OFFICE	
2 OFFICE	129 OFFICE	
2A TOILET	130 OFFICE	
2B STORAGE	131 RECEPTION	
3 OFFICE	132 WORK ROOM	
3A TOILET	133 CONFERENCE ROOM	
4 OFFICE	134 CONFERENCE ROOM	
4A TOILET	135 STORAGE	
4B STORAGE	136 OFFICE	
5 TRAINING	137 OFFICE	
5A TOILET	138 OFFICE	
5B STORAGE	139 OFFICE	
6 TRAINING	140 STORAGE	
6A TOILET	141 OFFICE	
7 TRAINING	142 OFFICE	
8 OFFICE	143 COPY ROOM	
9 STORAGE	144 WORK ROOM	
10 COPY ROOM	145 SERVER	
11 STORAGE	146 OFFICE	
12 STORAGE	147 JANITOR	
13 MECHANICAL	148 OFFICE	
101 OFFICE	149 OFFICE	
102 STORAGE	150 OFFICE	
103 OFFICE	151 OFFICE	
104 OFFICE	152 BOARD ROOM	
105 OFFICE	153 OFFICE	
106 OFFICE	154 OFFICE	
107 OFFICE	155 OFFICE	
108 OFFICE	156 JANITOR	
109 OFFICE	C101 CORRIDOR	
110 OFFICE	C102 CORRIDOR	
111 OFFICE	C103 CORRIDOR	
112 OFFICE	C104 CORRIDOR	
113 OFFICE	C105 CORRIDOR	
113A TESTING ROOM	C106 CORRIDOR	
113B TESTING ROOM	C107 CORRIDOR	
114 OFFICE	C108 CORRIDOR	
115 OFFICE	C109 CORRIDOR	
116 CONFERENCE ROOM	S101 STAR	
117 OFFICE	T101 TOILET	
118 OFFICE	T102 TOILET	
119 OFFICE	T103 WOMEN	
120 OFFICE	T104 TOILET	
121 OFFICE	T105 TOILET	
122 STORAGE	T106 TOILET	
123 OFFICE	T107 TOILET	
124 CONFERENCE ROOM	V101 VESTIBULE	
125 STORAGE	V102 VESTIBULE	



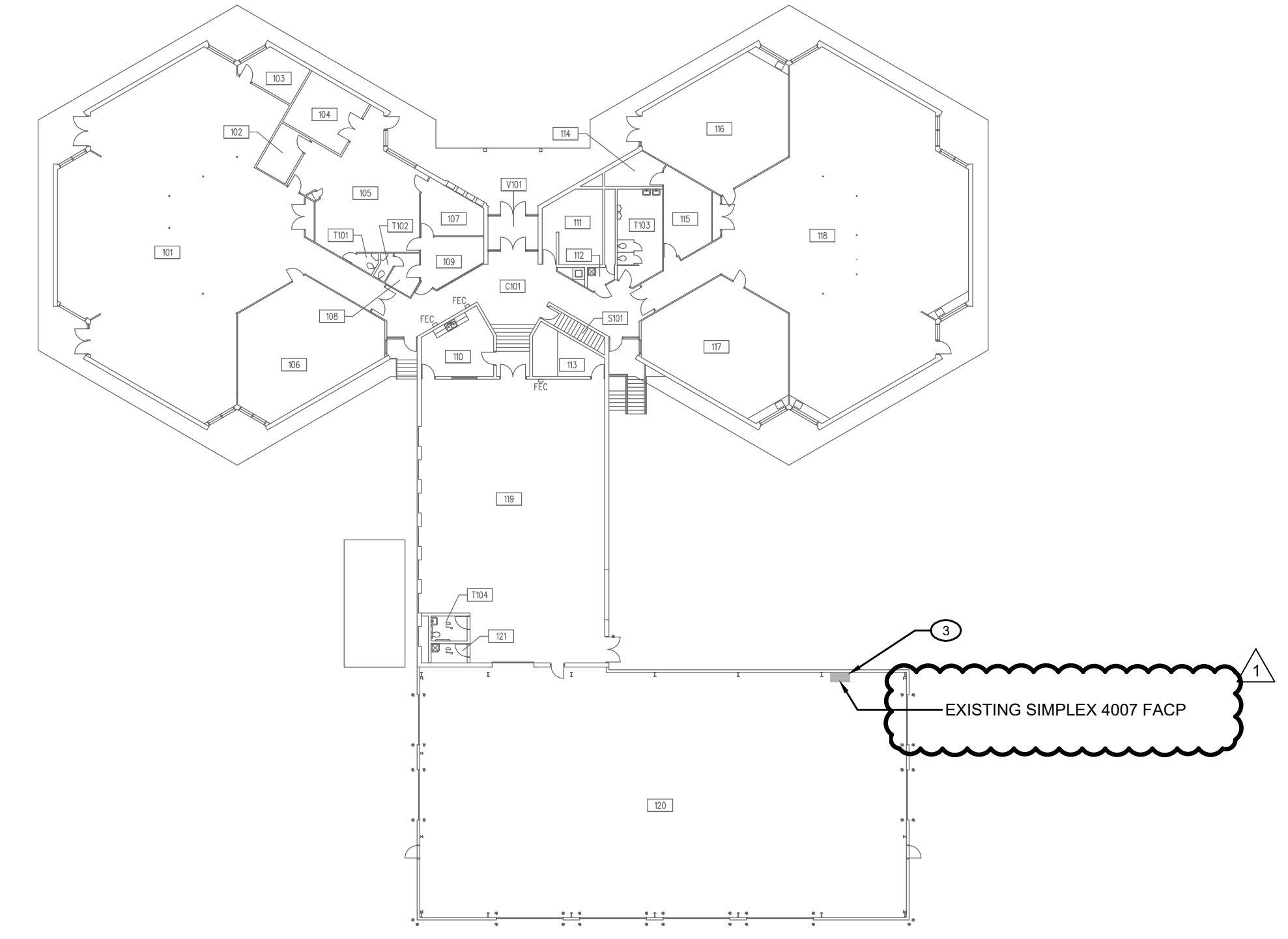
JFK ADMINISTRATIVE CENTER
LOWER LEVEL PLAN
1" = 30'
0 15 30 60 90
NORTH



JFK ADMINISTRATIVE CENTER
FIRST FLOOR PLAN
1" = 30'
0 15 30 60 90
NORTH



BUILDING SUPPORT SERVICES
LOWER LEVEL PLAN
1" = 30'
0 15 30 60 90
NORTH



BUILDING SUPPORT SERVICES
FIRST FLOOR PLAN
1" = 30'
0 15 30 60 90
NORTH

- SHEET NOTES**
- NEW DUCT CARBON MONOXIDE DETECTOR MOUNTED TO THE SUPPLY SIDE DUCTWORK. PROVIDE RELAYS AND ADDRESSABLE BASES AS REQUIRED TO INTERFACE WITH EXISTING FIRE ALARM CONTROL PANEL. EXTEND WIRING FROM EXISTING DUCT SMOKE DETECTOR WHERE AVAILABLE AND CONNECT, COMPLETE AS REQUIRED. DEVICE SHALL BE MOUNTED ADJACENT TO DUCT SMOKE DETECTOR. CO DETECTOR SHALL BE INSTALLED IN THE DUCTWORK BEFORE THE ZONES SPLIT TO PROVIDE COVERAGE FOR ALL ZONES ON THE UNIT.
 - NEW CEILING MOUNTED CARBON MONOXIDE SENSOR. DEVICE SHALL BE LOCATED WITHIN 5' OF THE GAS FIRED EQUIPMENT. VERIFY THE EXACT MOUNTING REQUIREMENTS WITH MANUFACTURER'S RECOMMENDATIONS AND EXTEND WIRING BACK TO THE FACP OR NEAREST REMOTE PANEL. REFER TO RISER DIAGRAM AND SYMBOL LIST FOR ADDITIONAL INFORMATION.
 - EXISTING FIRE ALARM CONTROL PANEL.

HEALY BENDER PATTON & BEEN
ARCHITECTS
4040 Helene Avenue
Naperville, IL 60564
T 630.904.4300
www.healybender.com

MILLIES
ENGINEERING GROUP
www.milliesengineeringgroup.com
(708) 924-8400
9711 Valparaiso Drive
Munster, Indiana 46352
221 N. LaSalle Street
Chicago, Illinois 60601
Copyright © 2025 Millies Engineering Group

2025 CARBON MONOXIDE DETECTOR WORK IN MULTIPLE BUILDINGS
FOR
JOLIET, ILLINOIS
JOLIET PUBLIC SCHOOLS DISTRICT 86
JOLIET, WILL COUNTY, ILLINOIS

REVISIONS

NO.	DATE	DESCRIPTION
1	01-28-2025	ADDENDUM #1

PROJ. NO. 6-1324-32
DRAWN BY RH
DATE 01-10-2025
SHEET NO. E-6
OF 7

FLOOR PLAN - JFK ADMINISTRATIVE CENTER
BUILDING SUPPORT SERVICES
COPYRIGHT © 2025 HEALY BENDER PATTON & BEEN ARCHITECTS

DIVISION 0 - BIDDING AND CONTRACT REQUIREMENTS
Section 00 02 00 - Notice To Bidders

Sealed bids for the 2025 Carbon Monoxide Detector Work In Multiple Buildings, will be received by the Board of School Inspectors, Joliet Public Schools District 86, Joliet, Will County, Illinois at their District Office at 420 North Raynor Avenue, Joliet, Illinois, until 10:00 A.M. prevailing time on the 4th day of February, 2025. Bids will be opened and read aloud at that time.

The work is to be performed in accordance with the proposed Contract Documents as prepared by Healy Bender Patton & Been Architects, 4040 Helene Avenue, Naperville, Illinois. The proposed Contract Documents may be obtained upon request to the office of the Architect at file@healybender.com. Bidders will be required to complete a Registered Plan Holder Record form and a Bidding Documents License Agreement for the Project

Upon receipt of a completed Registered Plan Holder Record form and a Bidding Documents License Agreement, prospective bidders will be sent bidding documents and will become registered plan holders. During the bidding period, the office of the Architect will send project addenda, clarifications, and other project information to registered plan holders via the email address(es) listed on the Registered Plan Holder Record on file at the Architect's office.

These proposed Contract Documents may be viewed online at Dodge Data & Analytics internet site at www.construction.com.

Bids will be received on General Contract Work including all trades.

BIDDER RESPONSIBILITY

Each Bidder must satisfactorily complete the Bidder Responsibility process described in Section 01 00 00 - Bidder Responsibility Criteria of the Project Manual by providing the required Documents.

In the case of a joint venture or partnership, each joint venturer or partner must independently meet each of the requirements set forth in Paragraphs 1.02, 1.03, 1.04 and 1.05 in Section 01 00 00 - Bidder Responsibility Criteria.

The required Documents must be delivered along with the bidder's sealed bid at the same place and time required for the bid. Contents of each bidder's Responsibility Criteria Documents will be available for public review.

The Bidder Responsibility Documents will be reviewed by the Owner and Architect to determine the lowest responsible Bidder.

Each bid must be accompanied by a Bid Guarantee in the form of a Bid Bond, Certified Check or Bank Draft in an amount equal to not less than ten percent (10%), of the bid and made payable to Joliet Public Schools District 86 located at 420 North Raynor Avenue, Joliet, Illinois. No bid shall be withdrawn for a period of thirty (30) days after the bids opening date without the consent of the Owner. Checks or drafts of unsuccessful bidders will be returned as soon as practical after opening and checking the bids.

Successful bidder must provide a Performance Bond and a Labor and Material Payment Bond in the full amount of the Contract, acceptable to the Owner. This Contract is subject to the Illinois Prevailing Wage Act (820 ILCS 130/1 et.seq.).

The Owner reserves the right to reject any or all bids and to waive any informalities in bidding.
Contact Paul DuFresne, Director of Facilities, at (815) 727-6506 to make arrangements to visit the site.

BOARD OF SCHOOL INSPECTORS
JOLIET PUBLIC SCHOOLS DISTRICT 86
JOLIET, WILL COUNTY, ILLINOIS

END 00 02 00